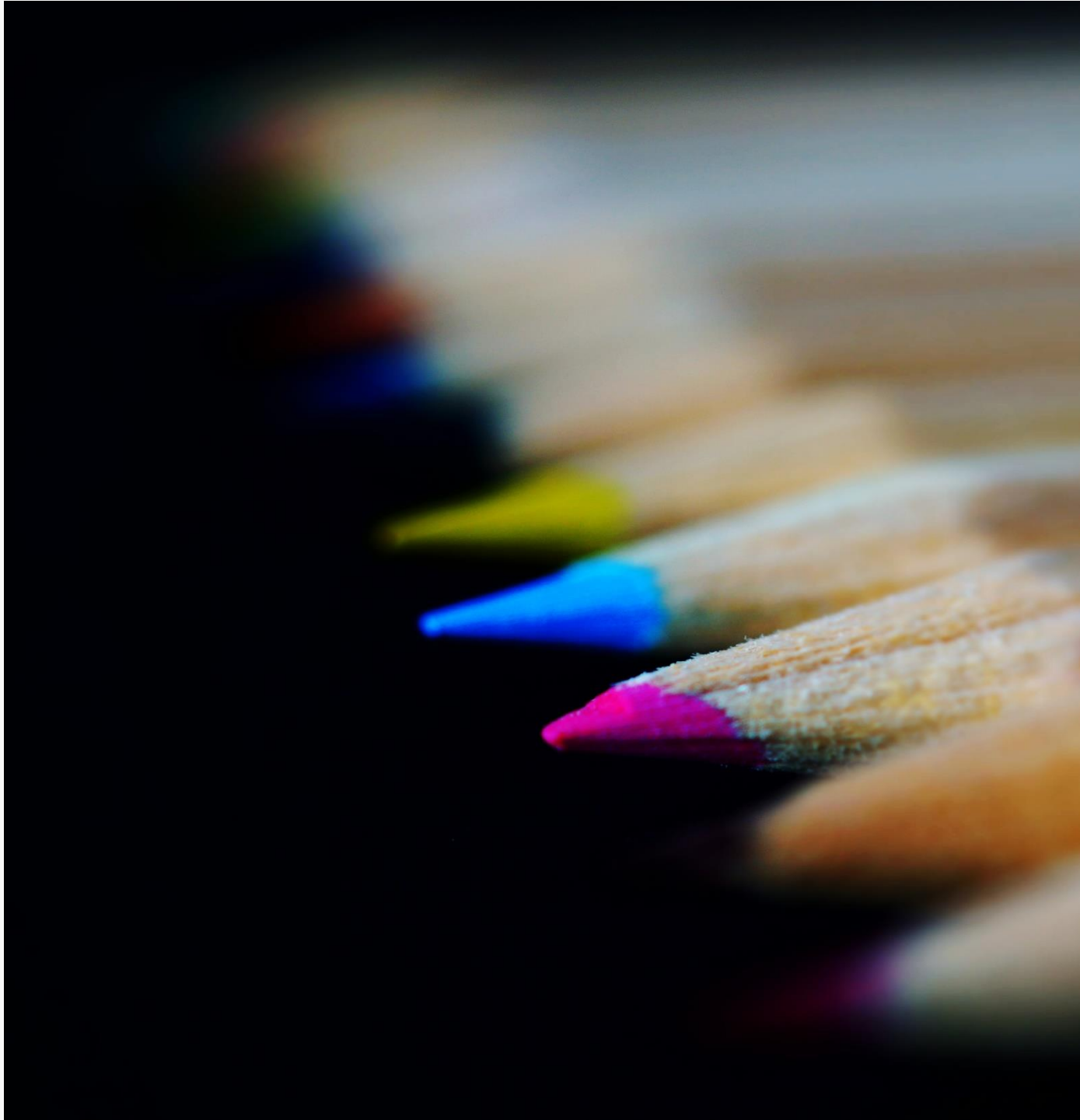




NEUWAVE
CAPITAL

Lets build together...



INTRODUCTION

WHY NEUWAVE?

Born plain out of desire to **contribute** to

- growth Stories with **equity financing**,
- augment capital with **structured finance**, and
- **mergers or acquisitions** to create economies of scale

⇒ Proven Experience in transaction process with reputed institutions

⇒ Strong expertise in target sectors



INDUSTRIES



SUSTAINABLE DEVELOPMENT

- ✓ Agri activities having linkages with farmers
- ✓ Poultry/Aquaculture
- ✓ Renewable Energy



CONSUMER & HEALTHCARE

- ✓ Pharma & Health-Tech
- ✓ Banking & Financial Services
- ✓ Education
- ✓ Retail



INDUSTRIAL & INFRASTRUCTURE

- ✓ Manufacturing
- ✓ Industries 2.0 – IOT Cos.
- ✓ Real Estate & Urban Development
- ✓ Infra Projects in Water, waste management etc.

LEADERSHIP TEAM WITH HANDS ON EXPERIENCE



Shriram Karthik K
Founder Member

- B.Com, MBA (Finance) from Goa Institute of Management
- 15 years of Corporate Exposure across multiple sectors
Power (Hydro/Thermal), Renewables (Wind/Solar), Construction, Manufacturing, Poultry & Food Processing
- Head of Finance at Srinivasa Farms, KSK Energy, Coastal Projects , Kalpan Hydro & GMR Ener



Vikash Kumar
Advisor

- B Tech from IIT-BHU and MBA (Finance) from IIT Kharagpur
- 10 years of experience in Investment Banking
- Ex-Director – Springforth Capital Advisors, SBI Caps, Deloitte Consulting, Sumitomo Mitsui Construction, BHEL
- Founded Hilt Brands in 2019 to establish a strong focused branded OTC medicines company.



Shekhar Kanchan
Mentor

- CA with 28+ years of experience having held leadership positions as CEO, CFO, Board member
- Held leadership positions in Multiple sectors – Engineering consultancy, Construction, Roads, Infrastructure, Power (Hydro/ Thermal/ Renewable), Healthcare, Animal Genetics, Human Diagnostics and Technology.

Equity Placement
& Debt Tie-Up

M&A / Joint
Ventures


Cross Border
Transactions

Business
Restructuring

Strategic
Initiatives


Regulatory
Compliance


CREDENTIALS – STRUCTURING TO EXECUTION



 INR 130 Cr Private Equity From IFC / World Bank
 INR 90 Cr Working Capital Tie-Up
 INR 70 Cr Project Financing for 4 Poultry / Food Processing Projects
 INR 34 Cr Structured Debt Tie-Up
 INR 20 Cr Restructuring of Cross Border Credit Facility

Divestment of Operating Wind Mills


 INR 900 Cr Term Loan Tie-up


 INR 40 Cr Financial Leasing of Capital Assets
 INR 5,000 Cr Corporate Debt Restructuring


 Complete Divestment of Renewable Energy Platform


 INR 130 Cr Securitization of Operating Asset Cash-Flows
 \$ 350 Mn Private Equity from IDFC, Temasek



\$5Mn

VC Funding from Helion Ventures



Vivimed

INR 50 Crs

Project finance for Biotech unit of the company

varthana

INR 65 Cr

Financing for further lending to schools and institutions.



INR 200 Cr

PE financing from a Singapore based fund



INR 200 Cr

Acquisition of coal mines in Indonesia



INR 1800 Cr

Debt restructuring for the construction giant

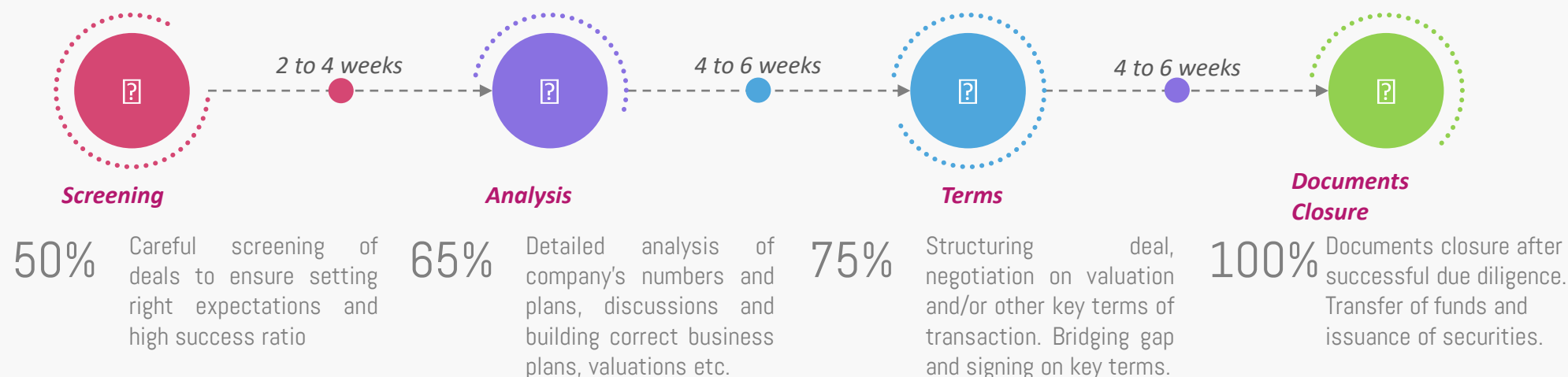


INR 100 Cr

Structured Finance for the dairy company for corporate reorganization

TRANSACTION PROCESSING LIFECYCLE

Transactions require adept balancing of data and relationships at various stages. Lot of issues can be foreseen with good examination and preparedness. With our direct experience of working on deals from both sides of tables, we pre-empt lot of issues to save time.



Few activities can run parallel too. And also, usually debt/structured finance deals will be much faster than equity deals.

Lets build together...

▶ SHRIRAM KARTHIK K
+91 91007 98848
shriram@neuwave.in

